

# *Demographics of Hip and Knee Arthroplasty*



**SUPPLEMENTARY REPORT  
2008**



**AOA**  
AUSTRALIAN  
ORTHOPAEDIC  
ASSOCIATION

National Joint Replacement Registry

# LIST OF TABLES

<b>NUMBER OF PATIENTS AND PROCEDURES RECORDED BY THE REGISTRY.....</b>	<b>1</b>
<b>BILATERAL HIP AND KNEE REPLACEMENT.....</b>	<b>2</b>
TABLE SB1: TIME BETWEEN PROCEDURES FOR BILATERAL PRIMARY HIP REPLACEMENT.....	2
TABLE SB2: TIME BETWEEN PROCEDURES FOR BILATERAL PRIMARY KNEE REPLACEMENT.....	2
<b>HIP REPLACEMENT.....</b>	<b>3</b>
TABLE SH1: NUMBER OF HIP REPLACEMENTS BY GENDER.....	3
TABLE SH2: AGE BY GENDER FOR ALL HIP REPLACEMENT.....	3
<b>PRIMARY PARTIAL HIP REPLACEMENT.....</b>	<b>4</b>
TABLE SH3-P: PRIMARY PARTIAL HIP AGE BY GENDER.....	4
TABLE SH3-PD: PRIMARY DIAGNOSIS.....	4
<b>REVISION OF KNOWN PRIMARY PARTIAL HIP REPLACEMENT.....</b>	<b>4</b>
TABLE SH3-R: REVISION OF KNOWN PRIMARY PARTIAL HIP AGE BY GENDER.....	4
TABLE SH3-RD: REVISION DIAGNOSIS.....	4
<b>PRIMARY PARTIAL RESURFACING HIP REPLACEMENT.....</b>	<b>5</b>
TABLE SH4-P: PRIMARY PARTIAL RESURFACING AGE BY GENDER.....	5
TABLE SH4-PD: PRIMARY DIAGNOSIS.....	5
<b>PRIMARY UNIPOLAR MONOBLOCK HIP REPLACEMENT.....</b>	<b>6</b>
TABLE SH5 -P: PRIMARY UNIPOLAR MONOBLOCK AGE BY GENDER.....	6
TABLE SH5-PD: PRIMARY DIAGNOSIS.....	6
<b>REVISION OF KNOWN PRIMARY UNIPOLAR MONOBLOCK HIP REPLACEMENT.....</b>	<b>6</b>
TABLE SH5:-R REVISION OF KNOWN PRIMARY UNIPOLAR MONOBLOCK AGE BY GENDER.....	6
TABLE SH5-RD: REVISION DIAGNOSIS.....	6
<b>PRIMARY UNIPOLAR MODULAR HIP REPLACEMENT.....</b>	<b>7</b>
TABLE SH6-P: PRIMARY UNIPOLAR MODULAR AGE BY GENDER.....	7
TABLE SH6-PD: PRIMARY DIAGNOSIS.....	7
<b>REVISION OF KNOWN PRIMARY UNIPOLAR MODULAR HIP REPLACEMENT.....</b>	<b>7</b>
TABLE SH6-R: REVISION OF KNOWN PRIMARY UNIPOLAR MONOBLOCK AGE AND GENDER.....	7
TABLE SH6-RD: REVISION DIAGNOSIS.....	7
<b>PRIMARY BIPOLAR HIP REPLACEMENT.....</b>	<b>8</b>
TABLE SH7-P: PRIMARY BIPOLAR AGE BY GENDER.....	8
TABLE SH7-PD: PRIMARY DIAGNOSIS.....	8
<b>REVISION OF KNOWN PRIMARY BIPOLAR HIP REPLACEMENT.....</b>	<b>8</b>
TABLE SH7-R: REVISION OF KNOWN PRIMARY BIPOLAR AGE BY GENDER.....	8
TABLE SH7-RD: REVISION DIAGNOSIS.....	8
<b>PRIMARY TOTAL HIP REPLACEMENT.....</b>	<b>9</b>
TABLE SH8-P: PRIMARY TOTAL AGE BY GENDER.....	9
TABLE SH8-PD: PRIMARY DIAGNOSIS.....	9
<b>REVISION OF KNOWN PRIMARY TOTAL HIP REPLACEMENT.....</b>	<b>9</b>
TABLE SH8-R: REVISION OF KNOWN PRIMARY TOTAL AGE AND GENDER.....	9
TABLE SH8-RD: REVISION DIAGNOSIS.....	9
<b>PRIMARY TOTAL RESURFACING HIP REPLACEMENT.....</b>	<b>10</b>
TABLE SH9-P: PRIMARY TOTAL RESURFACING AGE BY GENDER.....	10
TABLE SH9-PD: PRIMARY DIAGNOSIS.....	10
<b>REVISION OF KNOWN PRIMARY TOTAL RESURFACING HIP REPLACEMENT.....</b>	<b>10</b>
TABLE SH9-R: REVISION OF KNOWN PRIMARY TOTAL RESURFACING AGE BY GENDER.....	10
TABLE SH9-RD: REVISION DIAGNOSIS.....	10
<b>PRIMARY CONVENTIONAL TOTAL HIP REPLACEMENT.....</b>	<b>11</b>
TABLE SH10-P: PRIMARY CONVENTIONAL TOTAL AGE BY GENDER.....	11
TABLE SH10-PD: PRIMARY DIAGNOSIS.....	11
<b>REVISION OF KNOWN PRIMARY CONVENTIONAL TOTAL HIP REPLACEMENT.....</b>	<b>11</b>
TABLE SH10-R: REVISION OF KNOWN PRIMARY CONVENTIONAL TOTAL AGE BY GENDER.....	11
TABLE SH10-RD: REVISION DIAGNOSIS.....	11

<b>PRIMARY THRUST PLATE HIP REPLACEMENT .....</b>	<b>12</b>
TABLE SH11-P: PRIMARY THRUST PLATE AGE BY GENDER .....	12
TABLE SH11-PD: PRIMARY DIAGNOSIS .....	12
<b>REVISION OF KNOWN PRIMARY THRUST PLATE HIP REPLACEMENT .....</b>	<b>12</b>
TABLE SH11-R: REVISION OF KNOWN PRIMARY THRUST PLATE AGE BY GENDER.....	12
TABLE SH11-RD: REVISION DIAGNOSIS.....	12
<b><u>ALL REVISION HIP REPLACEMENT .....</u></b>	<b><u>13</u></b>
TABLE SH12-R: ALL REVISION HIP REPLACEMENT AGE BY GENDER.....	13
TABLE SH12-RD: REVISION DIAGNOSIS.....	13
<b><u>KNEE REPLACEMENT.....</u></b>	<b><u>14</u></b>
TABLE SK1: NUMBER OF KNEE REPLACEMENT BY GENDER .....	14
TABLE SK2: AGE BY GENDER FOR ALL KNEE REPLACEMENT.....	14
<b><u>PRIMARY PARTIAL RESURFACING KNEE REPLACEMENT.....</u></b>	<b><u>15</u></b>
TABLE SK3-P: PRIMARY PARTIAL RESURFACING AGE BY GENDER .....	15
TABLE SK3-PD: PRIMARY DIAGNOSIS .....	15
<b>REVISION OF KNOWN PRIMARY PARTIAL RESURFACING KNEE REPLACEMENT .....</b>	<b>15</b>
TABLE SK3-R: REVISION OF KNOWN PRIMARY PARTIAL RESURFACING AGE BY GENDER.....	15
TABLE SK3-RD: REVISION DIAGNOSIS .....	15
<b>PRIMARY UNISPACER KNEE REPLACEMENT .....</b>	<b>16</b>
TABLE SK4-P: PRIMARY UNISPACER AGE BY GENDER .....	16
TABLE SK4-PD: PRIMARY DIAGNOSIS .....	16
<b>REVISION OF KNOWN PRIMARY UNISPACER KNEE REPLACEMENT.....</b>	<b>16</b>
TABLE SK4-R: REVISION OF KNOWN PRIMARY UNISPACER AGE BY GENDER.....	16
TABLE SK4-RD: REVISION DIAGNOSIS.....	16
<b>PRIMARY PATELLA/TROCHLEAR KNEE REPLACEMENT.....</b>	<b>17</b>
TABLE SK5-P: PRIMARY PATELLA/TROCHLEAR AGE BY GENDER.....	17
TABLE SK5-PD: PRIMARY DIAGNOSIS .....	17
<b>REVISION OF KNOWN PRIMARY PATELLA/TROCHLEAR KNEE REPLACEMENT .....</b>	<b>17</b>
TABLE SK5-R: REVISION OF KNOWN PRIMARY PATELLA/TROCHLEAR AGE BY GENDER.....	17
TABLE SK5-RD: REVISION DIAGNOSIS.....	17
<b>PRIMARY UNICOMPARTMENTAL KNEE REPLACEMENT .....</b>	<b>18</b>
TABLE SK6-P: PRIMARY UNICOMPARTMENTAL AGE BY GENDER.....	18
TABLE SK6-PD: PRIMARY DIAGNOSIS .....	18
<b>REVISION OF KNOWN PRIMARY UNICOMPARTMENTAL KNEE REPLACEMENT.....</b>	<b>18</b>
TABLE SK6-R: REVISION OF KNOWN PRIMARY UNICOMPARTMENTAL AGE BY GENDER.....	18
TABLE SK6-RD: REVISION DIAGNOSIS.....	18
<b>PRIMARY BICOMPARTMENTAL KNEE REPLACEMENT.....</b>	<b>19</b>
TABLE SK7-P: PRIMARY BICOMPARTMENTAL AGE BY GENDER .....	19
TABLE SK7-PD: PRIMARY DIAGNOSIS .....	19
<b>KNOWN PRIMARY BICOMPARTMENTAL KNEE REPLACEMENT.....</b>	<b>19</b>
TABLE SK7-R: REVISION OF KNOWN PRIMARY BICOMPARTMENTAL AGE BY GENDER.....	19
TABLE SK7-RD: REVISION DIAGNOSIS.....	19
<b><u>PRIMARY TOTAL KNEE REPLACEMENT.....</u></b>	<b><u>20</u></b>
TABLE SK8-P: PRIMARY TOTAL AGE BY GENDER.....	20
TABLE SK8-PD: PRIMARY DIAGNOSIS .....	20
<b>REVISION OF KNOWN PRIMARY TOTAL KNEE REPLACEMENT .....</b>	<b>20</b>
TABLE SK8-R: REVISION OF KNOWN PRIMARY TOTAL AGE BY GENDER .....	20
TABLE SK8-RD: REVISION DIAGNOSIS.....	20
<b><u>ALL REVISION KNEE REPLACEMENT.....</u></b>	<b><u>21</u></b>
TABLE SK9-R: ALL REVISION KNEE REPLACEMENT AGE BY GENDER .....	21
TABLE SK9-RD: REVISION DIAGNOSIS.....	21

# LIST OF FIGURES

<b>HIP REPLACEMENT .....</b>	<b>3</b>
FIGURE SH1:      HIP REPLACEMENT BY GENDER.....	3
FIGURE SH2:      HIP REPLACEMENT BY AGE AND GENDER.....	3
<b>PRIMARY PARTIAL HIP REPLACEMENT .....</b>	<b>4</b>
FIGURE SH3-P:      PRIMARY AGE BY GENDER .....	4
<b>REVISION OF KNOWN PRIMARY PARTIAL HIP REPLACEMENT .....</b>	<b>4</b>
FIGURE SH3-R:      REVISION AGE BY GENDER.....	4
<b>PRIMARY PARTIAL RESURFACING HIP REPLACEMENT .....</b>	<b>5</b>
FIGURE SH4-P:      PRIMARY AGE BY GENDER .....	5
<b>PRIMARY UNIPOLAR MONOBLOCK HIP REPLACEMENT .....</b>	<b>6</b>
FIGURE SH5-P:      PRIMARY AGE BY GENDER .....	6
<b>REVISION OF KNOWN PRIMARY UNIPOLAR MONOBLOCK HIP REPLACEMENT.....</b>	<b>6</b>
FIGURE SH5-R:      REVISION AGE BY GENDER.....	6
<b>PRIMARY UNIPOLAR MODULAR HIP REPLACEMENT .....</b>	<b>7</b>
FIGURE SH6-P:      PRIMARY AGE BY GENDER .....	7
<b>REVISION OF KNOWN PRIMARY UNIPOLAR MODULAR HIP REPLACEMENT .....</b>	<b>7</b>
FIGURE SH6-R:      REVISION AGE BY GENDER.....	7
<b>PRIMARY BIPOLAR HIP REPLACEMENT .....</b>	<b>8</b>
FIGURE SH7-P:      PRIMARY AGE BY GENDER .....	8
<b>REVISION OF KNOWN PRIMARY BIPOLAR HIP REPLACEMENT .....</b>	<b>8</b>
FIGURE SH7-R:      REVISION AGE BY GENDER.....	8
<b>PRIMARY TOTAL HIP REPLACEMENT .....</b>	<b>9</b>
FIGURE SH8-P:      PRIMARY AGE BY GENDER .....	9
<b>REVISION OF KNOWN PRIMARY TOTAL HIP REPLACEMENT .....</b>	<b>9</b>
FIGURE SH8-R:      REVISION AGE BY GENDER.....	9
<b>PRIMARY TOTAL RESURFACING HIP REPLACEMENT.....</b>	<b>10</b>
FIGURE SH9-P:      PRIMARY AGE BY GENDER .....	10
<b>REVISION OF KNOWN PRIMARY TOTAL RESURFACING HIP REPLACEMENT .....</b>	<b>10</b>
FIGURE SH9-R:      REVISION AGE BY GENDER.....	10
<b>PRIMARY CONVENTIONAL TOTAL HIP REPLACEMENT .....</b>	<b>11</b>
FIGURE SH10-P:      PRIMARY AGE BY GENDER .....	11
<b>REVISION OF KNOWN PRIMARY CONVENTIONAL TOTAL HIP REPLACEMENT .....</b>	<b>11</b>
FIGURE SH10-R:      REVISION AGE BY GENDER.....	11
<b>PRIMARY THRUST PLATE HIP REPLACEMENT .....</b>	<b>12</b>
FIGURE SH11-P:      PRIMARY AGE BY GENDER .....	12
<b>REVISION OF KNOWN PRIMARY THRUST PLATE HIP REPLACEMENT .....</b>	<b>12</b>
FIGURE SH11-R:      REVISION AGE BY GENDER.....	12
<b>ALL REVISION HIP REPLACEMENT.....</b>	<b>13</b>
FIGURE SH12-R:      REVISION AGE BY GENDER.....	13
<b>KNEE REPLACEMENT .....</b>	<b>14</b>
FIGURE SK1:      KNEE REPLACEMENT BY GENDER.....	14
FIGURE SK2:      KNEE REPLACEMENT AGE BY GENDER.....	14
<b>PRIMARY PARTIAL RESURFACING KNEE REPLACEMENT.....</b>	<b>15</b>
FIGURE SK3-P: PRIMARY AGE BY GENDER .....	15
<b>REVISION OF KNOWN PRIMARY PARTIAL RESURFACING KNEE REPLACEMENT .....</b>	<b>15</b>
FIGURE SK3-R:      REVISION AGE BY GENDER.....	15
<b>PRIMARY UNISPACER KNEE REPLACEMENT .....</b>	<b>16</b>
FIGURE SK4-P:      PRIMARY AGE BY GENDER .....	16
<b>REVISION OF KNOWN PRIMARY UNISPACER KNEE REPLACEMENT.....</b>	<b>16</b>
FIGURE SK4-R:      REVISION AGE BY GENDER.....	16
<b>PRIMARY PATELLA/TROCHLEAR KNEE REPLACEMENT.....</b>	<b>17</b>
FIGURE SK5-P:      PRIMARY AGE BY GENDER .....	17

<b>REVISION OF KNOWN PRIMARY PATELLA/TROCHLEAR KNEE REPLACEMENT .....</b>	<b>17</b>
FIGURE SK5-R: REVISION AGE BY GENDER.....	17
<b>PRIMARY UNICOMPARTMENTAL KNEE REPLACEMENT .....</b>	<b>18</b>
FIGURE SK6-P: PRIMARY AGE BY GENDER .....	18
<b>REVISION OF KNOWN PRIMARY UNICOMPARTMENTAL KNEE REPLACEMENT.....</b>	<b>18</b>
FIGURE SK6-R: REVISION AGE BY GENDER.....	18
<b>PRIMARY BICOMPARTMENTAL KNEE REPLACEMENT.....</b>	<b>19</b>
FIGURE SK7-P: PRIMARY AGE BY GENDER.....	19
<b>KNOWN PRIMARY BICOMPARTMENTAL KNEE REPLACEMENT.....</b>	<b>19</b>
FIGURE SK7-R: REVISION AGE BY GENDER.....	19
<b><u>PRIMARY TOTAL KNEE REPLACEMENT.....</u></b>	<b><u>20</u></b>
FIGURE SK8-P: PRIMARY AGE BY GENDER .....	20
<b>REVISION OF KNOWN PRIMARY TOTAL KNEE REPLACEMENT .....</b>	<b>20</b>
FIGURE SK8-R: REVISION AGE BY GENDER.....	20
<b><u>ALL REVISION KNEE REPLACEMENT.....</u></b>	<b><u>21</u></b>
FIGURE SK9-R: REVISION AGE BY GENDER.....	21

# **NUMBER OF PATIENTS AND PROCEDURES RECORDED BY THE REGISTRY**

*1 September 1999 to 31 December 2007*

## **HIP AND KNEE REPLACEMENT**

320,868 Individual Patients  
400,989 Procedures  
32,285 (10.1%) Deaths

21.8% of patients have had more  
than one procedure

## **HIP REPLACEMENT**

165,537 Individual Patients  
191,673 Procedures  
23,925 (14.5%) Deaths

## **KNEE REPLACEMENT**

166,510 Individual Patients  
209,316 Procedures  
8,987 (5.4%) Deaths

## BILATERAL HIP AND KNEE REPLACEMENT

**Table SB1: Time between Procedures for Bilateral Primary Hip Replacement**

Bilateral Procedures	Same Day		1day-6wks		6wks-6mths		6mths-3yrs		>=3yrs		Total	
	N	%	N	%	N	%	N	%	N	%	N	%
Both Bipolar	.	.	14	0.1	27	0.2	74	0.5	22	0.1	137	0.8
Both Total Resurf	231	1.4	48	0.3	231	1.4	603	3.7	157	1.0	1270	7.9
Both Thrust Plate	1	0.0	.	.	8	0.0	14	0.1	4	0.0	27	0.2
Both Total	618	3.8	234	1.5	3203	19.9	7218	44.8	2165	13.4	13438	83.4
Both Unip Modular	6	0.0	11	0.1	33	0.2	50	0.3	13	0.1	113	0.7
Both Unip Monoblock	7	0.0	32	0.2	95	0.6	179	1.1	45	0.3	358	2.2
Bipolar/Total Hip	2	0.0	3	0.0	19	0.1	61	0.4	37	0.2	122	0.8
Bipolar/Unip Modular	.	.	2	0.0	15	0.1	34	0.2	13	0.1	64	0.4
Bipolar/Unip Monoblock	.	.	4	0.0	18	0.1	45	0.3	17	0.1	84	0.5
Total Resurf/Total Hip	7	0.0	2	0.0	15	0.1	126	0.8	97	0.6	247	1.5
Thrust Plate /Total Hip	.	.	.	.	.	.	2	0.0	2	0.0	4	0.0
Total Hip/Partial Resurf	.	.	.	.	.	.	1	0.0	.	.	1	0.0
Unip Modular/Total Resurf	.	.	.	.	1	0.0	1	0.0	.	.	2	0.0
Unip Modular/Total Hip	.	.	.	.	11	0.1	46	0.3	29	0.2	86	0.5
Unip Mono/Total Hip	.	.	1	0.0	10	0.1	35	0.2	22	0.1	68	0.4
Unip Mono/Unip Modular	.	.	7	0.0	20	0.1	58	0.4	16	0.1	101	0.6
<b>Total</b>	<b>872</b>	<b>5.4</b>	<b>358</b>	<b>2.2</b>	<b>3706</b>	<b>23.0</b>	<b>8547</b>	<b>53.0</b>	<b>2639</b>	<b>16.4</b>	<b>16122</b>	<b>100.0</b>

**Table SB2: Time between Procedures for Bilateral Primary Knee Replacement**

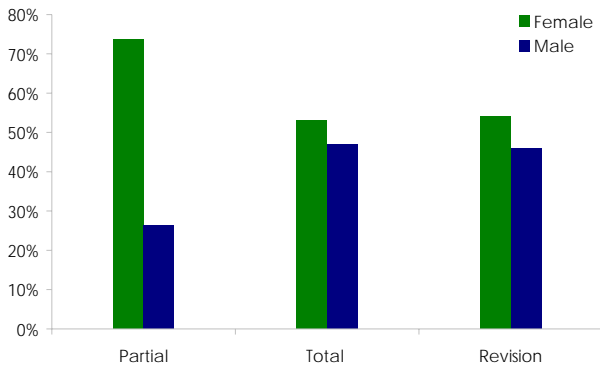
Bilateral Procedures	Same Day		1day-6wks		6wks-6mths		6mths-3yrs		>=3yrs		Total	
	N	%	N	%	N	%	N	%	N	%	N	%
Both Bicompartmental	5	0.0	1	0.0	.	.	.	.	.	.	6	0.0
Both Patella/Trochlear	116	0.4	5	0.0	19	0.1	36	0.1	5	0.0	181	0.6
Both Partial Resurfacing	1	0.0	.	.	2	0.0	1	0.0	.	.	4	0.0
Both TKR	6482	19.8	482	1.5	3891	11.9	13172	40.3	3217	9.8	27244	83.3
Both UKR	1540	4.7	84	0.3	479	1.5	1145	3.5	310	0.9	3558	10.9
Patella/Trochlear & TKR	5	0.0	1	0.0	1	0.0	26	0.1	14	0.0	47	0.1
Patella/Trochlear & UKR	.	.	.	.	.	.	6	0.0	1	0.0	7	0.0
TKR & Bicompartmental	.	.	.	.	.	.	.	.	1	0.0	1	0.0
TKR & Partial Resurfacing	.	.	.	.	1	0.0	.	.	.	.	1	0.0
TKR & Unispacer	.	.	.	.	1	0.0	.	.	.	.	1	0.0
UKR & Bicompartmental	.	.	.	.	.	.	1	0.0	2	0.0	3	0.0
UKR & Partial Resurfacing	.	.	.	.	.	.	2	0.0	.	.	2	0.0
UKR & TKR	182	0.6	16	0.0	107	0.3	845	2.6	486	1.5	1636	5.0
UKR & Unispacer	.	.	.	.	1	0.0	3	0.0	.	.	4	0.0
<b>Total</b>	<b>8331</b>	<b>25.5</b>	<b>589</b>	<b>1.8</b>	<b>4502</b>	<b>13.8</b>	<b>15237</b>	<b>46.6</b>	<b>4036</b>	<b>12.3</b>	<b>32695</b>	<b>100.0</b>

# HIP REPLACEMENT

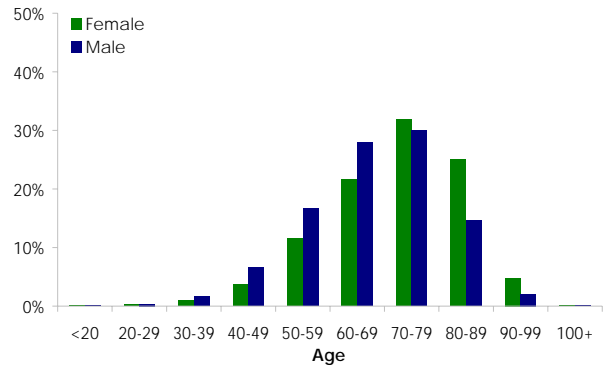
**Table SH1: Number of Hip Replacements by Gender**

Hip Replacement	Female		Male		Total	
	N	%	N	%	N	%
Unipolar Monoblock	12246	74.2	4257	25.8	16503	51.4
Unipolar Modular	5428	73.3	1976	26.7	7404	23.1
Bipolar	5989	73.2	2188	26.8	8177	25.5
Partial Resurfacing	1	12.5	7	87.5	8	0.0
<b>Primary Partial Hip</b>	23664	73.7	8428	26.3	32092	100.0
Conventional Total	69225	55.4	55779	44.6	125004	92.1
Total Resurfacing	2898	27.3	7725	72.7	10623	7.8
Thrust Plate	50	29.1	122	70.9	172	0.1
<b>Primary Total Hip</b>	72173	53.1	63626	46.9	135799	100.0
<b>Revision Hip</b>	12860	54.1	10922	45.9	23782	100.0
<b>Total</b>	<b>108697</b>	<b>56.7</b>	<b>82976</b>	<b>43.3</b>	<b>191673</b>	<b>100.0</b>

**Figure SH1: Hip Replacement by Gender**



**Figure SH2: Hip Replacement by Age and Gender**



**Table SH2: Age by Gender for All Hip Replacement**

Gender	N	%	Min	Max	Med	Mean	SD
Female	108697	56.7	13	105	74	71.8	12.5
Male	82976	43.3	13	107	68	67.4	12.5
<b>Total</b>	<b>191673</b>	<b>100.0</b>	<b>13</b>	<b>107</b>	<b>71</b>	<b>69.9</b>	<b>12.7</b>

# PRIMARY PARTIAL HIP REPLACEMENT

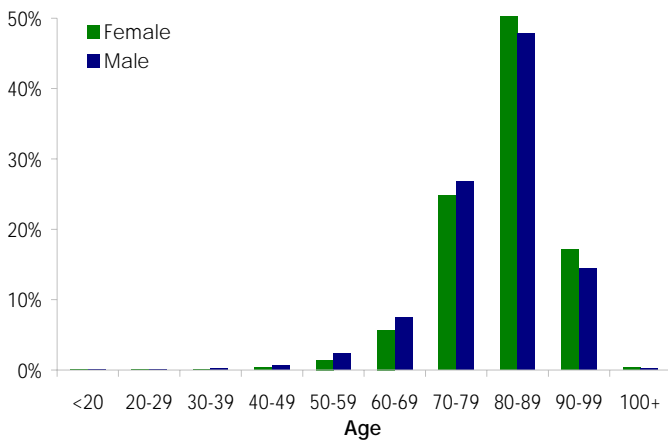
Table SH3-P: Primary Partial Hip Age by Gender

Gender	N	%	Min	Max	Med	Mean	SD
Female	23664	73.7	17	105	83	82.0	8.6
Male	8428	26.3	17	107	82	80.6	9.5
<b>Total</b>	<b>32092</b>	<b>100.0</b>	<b>17</b>	<b>107</b>	<b>83</b>	<b>81.6</b>	<b>8.9</b>

Table SH3-PD: Primary Diagnosis

Primary Diagnosis	N	%
Fractured Neck of Femur	30158	94.0
Osteoarthritis	1088	3.4
Tumour	447	1.4
Failed Internal Fixation	205	0.6
Avascular Necrosis	131	0.4
Rheumatoid Arthritis	26	0.1
Developmental Dysplasia	22	0.1
Other	15	0.0
<b>Total</b>	<b>32092</b>	<b>100.0</b>

Figure SH3-P: Primary Age by Gender



## Revision of Known Primary Partial Hip Replacement

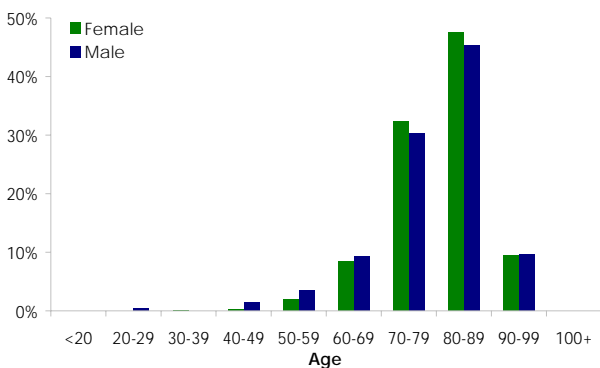
Table SH3-R: Revision of Known Primary Partial Hip Age by Gender

Gender	N	%	Min	Max	Med	Mean	SD
Female	710	73.2	30	98	81	79.7	8.4
Male	260	26.8	20	99	81	78.4	10.4
<b>Total</b>	<b>970</b>	<b>100.0</b>	<b>20</b>	<b>99</b>	<b>81</b>	<b>79.4</b>	<b>9.0</b>

Table SH3-RD: Revision Diagnosis

Revision Diagnosis	N	%
Loosening	382	36.7
Fracture	193	18.5
Dislocation of Prosthesis	147	14.1
Infection	119	11.4
Pain	111	10.7
Other	57	5.5
Lysis	15	1.4
Wear Acetabulum	13	1.2
Implant Breakage Stem	5	0.5
<b>Total</b>	<b>1042</b>	<b>100.0</b>

Figure SH3-R: Revision Age by Gender



Note: Some patients have multiple diagnoses.

## *Primary Partial Resurfacing Hip Replacement*

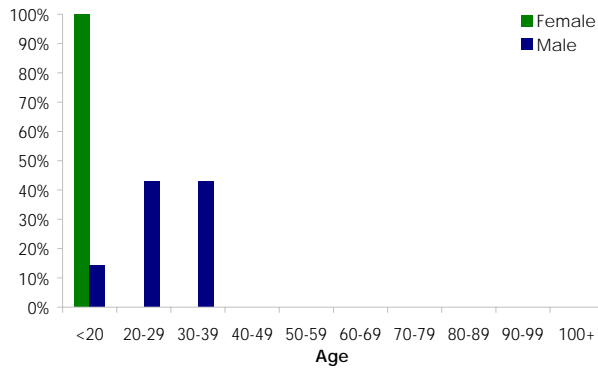
**Table SH4-P: Primary Partial Resurfacing Age by Gender**

Gender	N	%	Min	Max	Med	Mean	SD
Female	1	12.5	17	17	17	17.0	0
Male	7	87.5	18	34	29	26.6	6.2
<b>Total</b>	<b>8</b>	<b>100.0</b>	<b>17</b>	<b>34</b>	<b>26</b>	<b>25.4</b>	<b>6.6</b>

**Table SH4-PD: Primary Diagnosis**

Primary Diagnosis	N	%
Avascular Necrosis	4	50.0
Osteoarthritis	2	25.0
Other	2	25.0
<b>Total</b>	<b>8</b>	<b>100.0</b>

**Figure SH4-P: Primary Age by Gender**

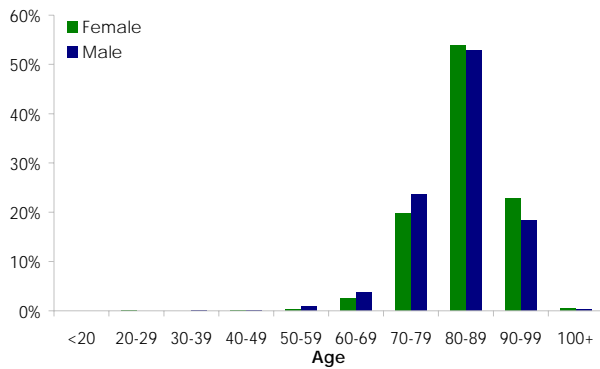


## Primary Unipolar Monoblock Hip Replacement

**Table SH5-P: Primary Unipolar Monoblock Age by Gender**

Gender	N	%	Min	Max	Med	Mean	SD
Female	12246	74.2	29	105	85	84.2	7.1
Male	4257	25.8	32	107	83	83.0	7.7
<b>Total</b>	<b>16503</b>	<b>100.0</b>	<b>29</b>	<b>107</b>	<b>84</b>	<b>83.9</b>	<b>7.3</b>

**Figure SH5-P: Primary Age by Gender**



**Table SH5-PD: Primary Diagnosis**

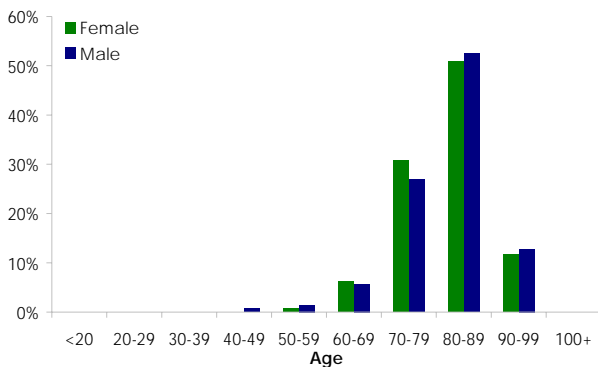
Primary Diagnosis	N	%
Fractured Neck of Femur	16061	97.3
Osteoarthritis	316	1.9
Tumour	47	0.3
Avascular Necrosis	37	0.2
Failed Internal Fixation	19	0.1
Rheumatoid Arthritis	11	0.1
Developmental Dysplasia	11	0.1
Other	1	0.0
<b>Total</b>	<b>16503</b>	<b>100.0</b>

## Revision of Known Primary Unipolar Monoblock Hip Replacement

**Table SH5-R: Revision of Known Primary Unipolar Monoblock Age by Gender**

Gender	N	%	Min	Max	Med	Mean	SD
Female	439	75.7	50	98	82	81.3	7.2
Male	141	24.3	47	99	82	81.1	8.4
<b>Total</b>	<b>580</b>	<b>100.0</b>	<b>47</b>	<b>99</b>	<b>82</b>	<b>81.3</b>	<b>7.5</b>

**Figure SH5-R: Revision Age by Gender**



**Table SH5-RD: Revision Diagnosis**

Revision Diagnosis	N	%
Loosening	301	48.3
Fracture	110	17.7
Dislocation of Prosthesis	64	10.3
Pain	54	8.7
Infection	52	8.3
Other	26	4.2
Lysis	8	1.3
Wear Acetabulum	5	0.8
Implant Breakage Stem	3	0.5
<b>Total</b>	<b>623</b>	<b>100.0</b>

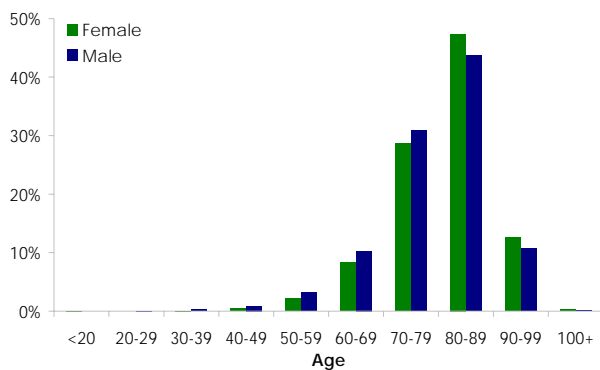
Note: Some patients have multiple diagnoses.

## Primary Unipolar Modular Hip Replacement

**Table SH6-P: Primary Unipolar Modular Age by Gender**

Gender	N	%	Min	Max	Med	Mean	SD
Female	5428	73.3	18	105	82	80.4	9.0
Male	1976	26.7	20	102	81	79.0	9.8
<b>Total</b>	<b>7404</b>	<b>100.0</b>	<b>18</b>	<b>105</b>	<b>81</b>	<b>80.0</b>	<b>9.2</b>

**Figure SH6-P: Primary Age by Gender**



**Table SH6-PD: Primary Diagnosis**

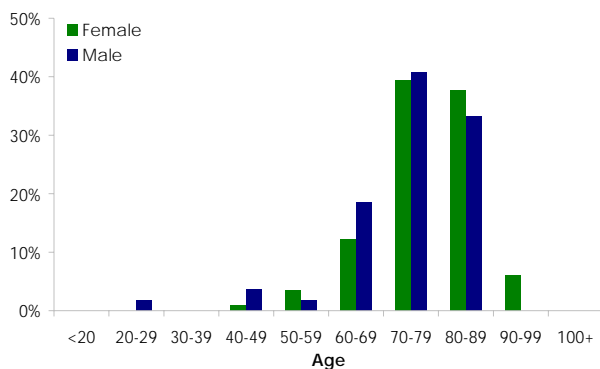
Primary Diagnosis	N	%
Fractured Neck of Femur	6800	91.8
Osteoarthritis	388	5.2
Tumour	104	1.4
Failed Internal Fixation	76	1.0
Avascular Necrosis	24	0.3
Rheumatoid Arthritis	7	0.1
Other	3	0.0
Developmental Dysplasia	2	0.0
<b>Total</b>	<b>7404</b>	<b>100.0</b>

## Revision of Known Primary Unipolar Modular Hip Replacement

**Table SH6-R: Revision of Known Primary Unipolar Monoblock Age and Gender**

Gender	N	%	Min	Max	Med	Mean	SD
Female	114	67.9	45	94	79	77.0	8.8
Male	54	32.1	20	89	77	73.3	12.2
<b>Total</b>	<b>168</b>	<b>100.0</b>	<b>20</b>	<b>94</b>	<b>78</b>	<b>75.8</b>	<b>10.1</b>

**Figure SH6-R: Revision Age by Gender**



**Table SH6-RD: Revision Diagnosis**

Revision Diagnosis	N	%
Dislocation of Prosthesis	39	21.7
Infection	30	16.7
Loosening	29	16.1
Fracture	28	15.6
Pain	27	15.0
Other	12	6.7
Lysis	7	3.9
Wear Acetabulum	7	3.9
Implant Breakage Stem	1	0.6
<b>Total</b>	<b>180</b>	<b>100.0</b>

Note: Some patients have multiple diagnoses.

## Primary Bipolar Hip Replacement

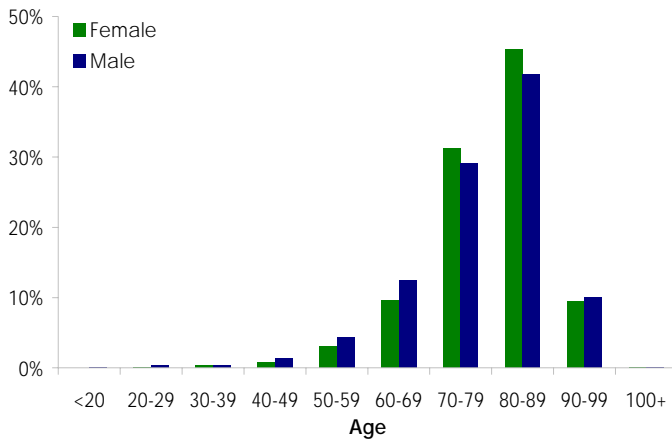
Table SH7-P: Primary Bipolar Age by Gender

Gender	N	%	Min	Max	Med	Mean	SD
Female	5989	73.2	17	102	80	78.9	9.7
Male	2188	26.8	17	100	80	77.8	10.9
<b>Total</b>	<b>8177</b>	<b>100.0</b>	<b>17</b>	<b>102</b>	<b>80</b>	<b>78.6</b>	<b>10.1</b>

Table SH7-PD: Primary Diagnosis

Primary Diagnosis	N	%
Fractured Neck of Femur	7297	89.2
Osteoarthritis	382	4.7
Tumour	296	3.6
Failed Internal Fixation	110	1.3
Avascular Necrosis	66	0.8
Developmental Dysplasia	9	0.1
Other	9	0.1
Rheumatoid Arthritis	8	0.1
<b>Total</b>	<b>8177</b>	<b>100.0</b>

Figure SH7-P: Primary Age by Gender



## Revision of Known Primary Bipolar Hip Replacement

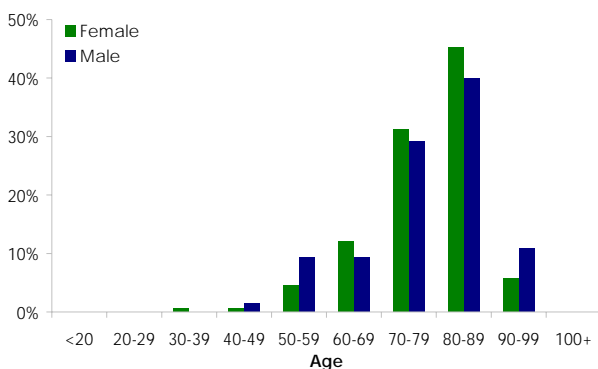
Table SH7-R: Revision of Known Primary Bipolar Age by Gender

Gender	N	%	Min	Max	Med	Mean	SD
Female	157	70.7	30	97	80	77.3	10.2
Male	65	29.3	49	93	80	76.8	10.9
<b>Total</b>	<b>222</b>	<b>100.0</b>	<b>30</b>	<b>97</b>	<b>80</b>	<b>77.2</b>	<b>10.4</b>

Table SH7-RD: Revision Diagnosis

Revision Diagnosis	N	%
Fracture	55	23.0
Loosening	52	21.8
Dislocation of Prosthesis	44	18.4
Infection	37	15.5
Pain	30	12.6
Other	19	7.9
Implant Breakage Stem	1	0.4
Wear Acetabulum	1	0.4
<b>Total</b>	<b>239</b>	<b>100.0</b>

Figure SH7-R: Revision Age by Gender



Note: Some patients have multiple diagnoses.

# PRIMARY TOTAL HIP REPLACEMENT

Table SH8-P: Primary Total Age by Gender

Gender	N	%	Min	Max	Med	Mean	SD
Female	72173	53.1	13	101	70	68.6	11.8
Male	63626	46.9	13	101	66	65.2	11.8
<b>Total</b>	<b>135799</b>	<b>100.0</b>	<b>13</b>	<b>101</b>	<b>68</b>	<b>67.0</b>	<b>11.9</b>

Figure SH8-P: Primary Age by Gender

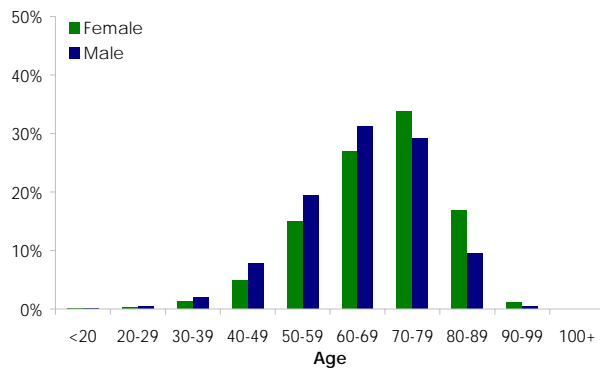


Table SH8-PD: Primary Diagnosis

Primary Diagnosis	N	%
Osteoarthritis	120548	88.8
Avascular Necrosis	5103	3.8
Fractured Neck of Femur	4079	3.0
Developmental Dysplasia	2037	1.5
Rheumatoid Arthritis	1910	1.4
Tumour	725	0.5
Other Inflammatory Arthritis	697	0.5
Failed Internal Fixation	482	0.4
Other	90	0.1
Arthrodesis Takedown	71	0.1
Fracture/Dislocation	57	0.0
<b>Total</b>	<b>135799</b>	<b>100.0</b>

## Revision of Known Primary Total Hip Replacement

Table SH8-R: Revision of Known Primary Total Age and Gender

Gender	N	%	Min	Max	Med	Mean	SD
Female	1852	53.1	21	97	70	68.5	12.0
Male	1637	46.9	22	95	68	67.1	12.2
<b>Total</b>	<b>3489</b>	<b>100.0</b>	<b>21</b>	<b>97</b>	<b>69</b>	<b>67.8</b>	<b>12.1</b>

Figure SH8-R: Revision Age by Gender

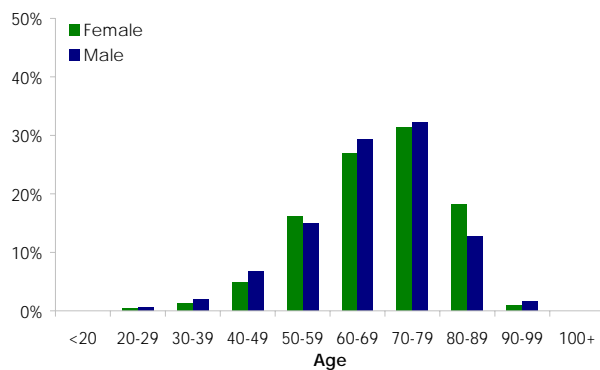


Table SH8-RD: Revision Diagnosis

Revision Diagnosis	N	%
Dislocation of Prosthesis	1083	28.7
Loosening	985	26.1
Fracture	665	17.7
Infection	534	14.2
Other	240	6.4
Pain	93	2.5
Lysis	71	1.9
Implant Breakage Acetabular	47	1.2
Wear Acetabulum	17	0.5
Implant Breakage Stem	17	0.5
Implant Breakage Head	15	0.4
<b>Total</b>	<b>3767</b>	<b>100.0</b>

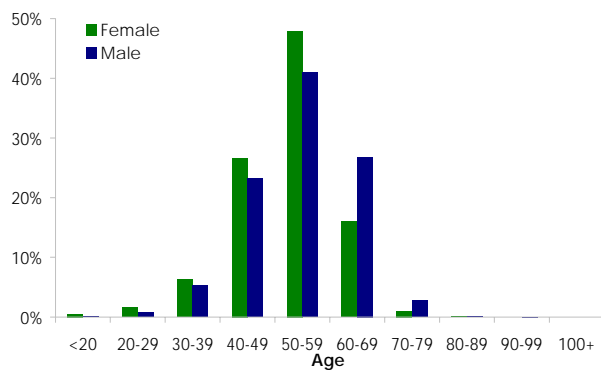
Note: Some patients have multiple diagnoses

## *Primary Total Resurfacing Hip Replacement*

**Table SH9-P: Primary Total Resurfacing Age by Gender**

Gender	N	%	Min	Max	Med	Mean	SD
Female	2898	27.3	14	81	53	51.7	8.8
Male	7725	72.7	13	93	55	54.2	9.1
<b>Total</b>	<b>10623</b>	<b>100.0</b>	<b>13</b>	<b>93</b>	<b>54</b>	<b>53.5</b>	<b>9.1</b>

**Figure SH9-P: Primary Age by Gender**



**Table SH9-PD: Primary Diagnosis**

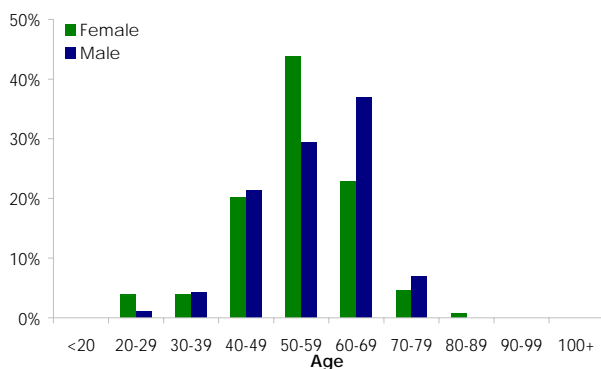
Primary Diagnosis	N	%
Osteoarthritis	9983	94.0
Developmental Dysplasia	321	3.0
Avascular Necrosis	217	2.0
Other Inflammatory Arthritis	48	0.5
Rheumatoid Arthritis	45	0.4
Tumour	3	0.0
Other	3	0.0
Failed Internal Fixation	2	0.0
Arthrodesis Takedown	1	0.0
<b>Total</b>	<b>10623</b>	<b>100.0</b>

## *Revision of Known Primary Total Resurfacing Hip Replacement*

**Table SH9-R: Revision of Known Primary Total Resurfacing Age by Gender**

Gender	N	%	Min	Max	Med	Mean	SD
Female	153	45.0	21	80	55	54.0	10.3
Male	187	55.0	22	78	58	56.4	10.4
<b>Total</b>	<b>340</b>	<b>100.0</b>	<b>21</b>	<b>80</b>	<b>57</b>	<b>55.3</b>	<b>10.4</b>

**Figure SH9-R: Revision Age by Gender**



**Table SH9-RD: Revision Diagnosis**

Revision Diagnosis	N	%
Fracture	150	41.1
Loosening	89	24.4
Other	49	13.4
Infection	31	8.5
Pain	20	5.5
Lysis	14	3.8
Dislocation of Prosthesis	12	3.3
<b>Total</b>	<b>365</b>	<b>100.0</b>

Note: Some patients have multiple diagnoses

## Primary Conventional Total Hip Replacement

Table SH10-P: Primary Conventional Total Age by Gender

Gender	N	%	Min	Max	Med	Mean	SD
Female	69225	55.4	13	101	71	69.3	11.3
Male	55779	44.6	13	101	68	66.7	11.3
<b>Total</b>	<b>125004</b>	<b>100.0</b>	<b>13</b>	<b>101</b>	<b>69</b>	<b>68.1</b>	<b>11.4</b>

Figure SH10-P: Primary Age by Gender

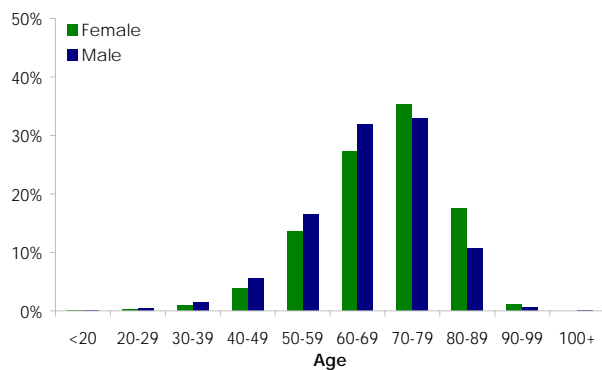


Table SH10-PD: Primary Diagnosis

Primary Diagnosis	N	%
Osteoarthritis	110403	88.3
Avascular Necrosis	4882	3.9
Fractured Neck of Femur	4079	3.3
Rheumatoid Arthritis	1861	1.5
Developmental Dysplasia	1715	1.4
Tumour	722	0.6
Other Inflammatory Arthritis	648	0.5
Failed Internal Fixation	480	0.4
Other	87	0.1
Arthrodesis Takedown	70	0.1
Fracture/Dislocation	57	0.0
<b>Total</b>	<b>125004</b>	<b>100.0</b>

## Revision of Known Primary Conventional Total Hip Replacement

Table SH10-R: Revision of Known Primary Conventional Total Age by Gender

Gender	N	%	Min	Max	Med	Mean	SD
Female	1698	54.0	23	97	71	69.8	11.3
Male	1447	46.0	23	95	70	68.5	11.7
<b>Total</b>	<b>3145</b>	<b>100.0</b>	<b>23</b>	<b>97</b>	<b>70</b>	<b>69.2</b>	<b>11.5</b>

Figure SH10-R: Revision Age by Gender

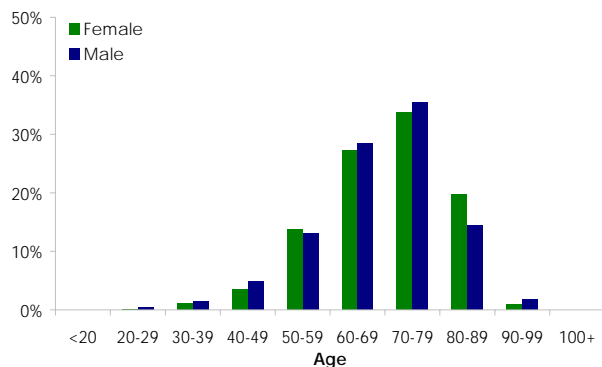


Table SH10-RD: Revision Diagnosis

Revision Diagnosis	N	%
Dislocation of Prosthesis	1071	31.5
Loosening	893	26.3
Fracture	514	15.1
Infection	503	14.8
Other	191	5.6
Pain	73	2.1
Lysis	57	1.7
Implant Breakage Acetabular	47	1.4
Wear Acetabulum	17	0.5
Implant Breakage Stem	17	0.5
Implant Breakage Head	15	0.4
<b>Total</b>	<b>3398</b>	<b>100.0</b>

Note: Some patients have multiple diagnoses

## Primary Thrust Plate Hip Replacement

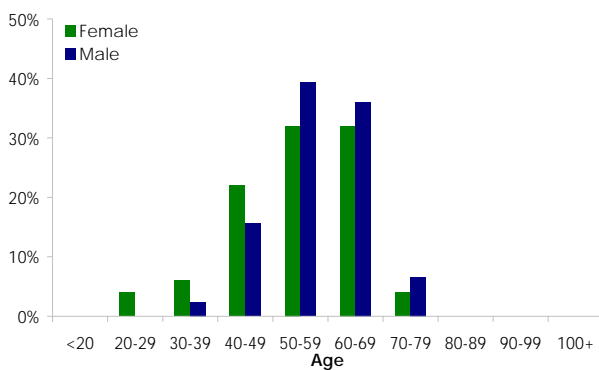
Table SH11-P: Primary Thrust Plate Age by Gender

Gender	N	%	Min	Max	Med	Mean	SD
Female	50	29.1	27	71	55	54.0	10.8
Male	122	70.9	34	75	58	57.6	8.4
<b>Total</b>	<b>172</b>	<b>100.0</b>	<b>27</b>	<b>75</b>	<b>57</b>	<b>56.6</b>	<b>9.3</b>

Table SH11-PD: Primary Diagnosis

Primary Diagnosis	N	%
Osteoarthritis	162	94.2
Avascular Necrosis	4	2.3
Rheumatoid Arthritis	4	2.3
Developmental Dysplasia	1	0.6
Other Inflammatory Arthritis	1	0.6
<b>Total</b>	<b>172</b>	<b>100.0</b>

Figure SH11-P: Primary Age by Gender



## Revision of Known Primary Thrust Plate Hip Replacement

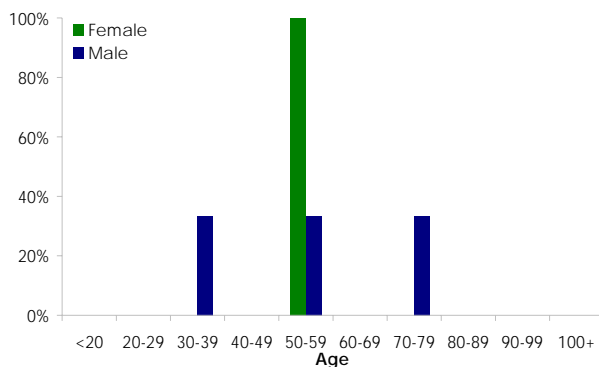
Table SH11-R: Revision of Known Primary Thrust Plate Age by Gender

Gender	N	%	Min	Max	Med	Mean	SD
Female	1	25.0	57	57	57	57.0	0
Male	3	75.0	36	76	56	56.0	20.0
<b>Total</b>	<b>4</b>	<b>100.0</b>	<b>36</b>	<b>76</b>	<b>57</b>	<b>56.3</b>	<b>16.3</b>

Table SH11-RD: Revision Diagnosis

Revision Diagnosis	N	%
Fracture	3	75.0
Loosening	1	25.0
<b>Total</b>	<b>4</b>	<b>100.0</b>

Figure SH11-R: Revision Age by Gender



## ALL REVISION HIP REPLACEMENT

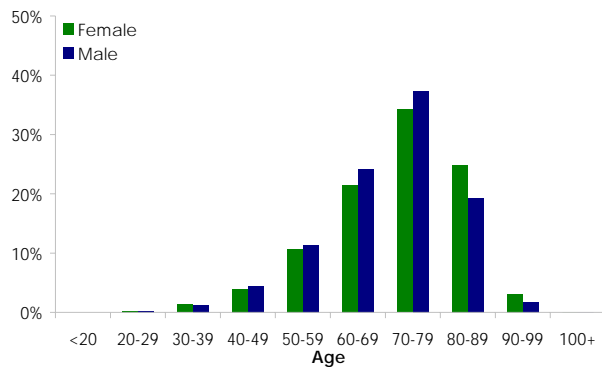
**Table SH12-R: All Revision Hip Replacement Age by Gender**

Gender	N	%	Min	Max	Med	Mean	SD
Female	12860	54.1	20	100	74	71.5	12.2
Male	10922	45.9	20	100	72	70.1	11.7
<b>Total</b>	<b>23782</b>	<b>100.0</b>	<b>20</b>	<b>100</b>	<b>73</b>	<b>70.8</b>	<b>12.0</b>

**Table SH12-RD: Revision Diagnosis**

Revision Diagnosis	N	%
Loosening	12524	45.7
Dislocation of Prosthesis	4046	14.8
Lysis	2764	10.1
Fracture	2516	9.2
Infection	2493	9.1
Wear Acetabulum	916	3.3
Other	739	2.7
Pain	565	2.1
Implant Breakage Acetabular	545	2.0
Implant Breakage Stem	245	0.9
Implant Breakage Head	37	0.1
<b>Total</b>	<b>27390</b>	<b>100.0</b>

**Figure SH12-R: Revision Age by Gender**



Note: Some patients have multiple diagnoses

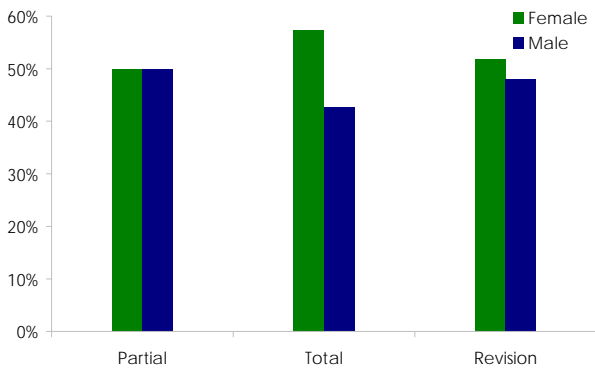
Note: These include all revision hip replacements, regardless of whether the primary has been recorded by the Registry

# KNEE REPLACEMENT

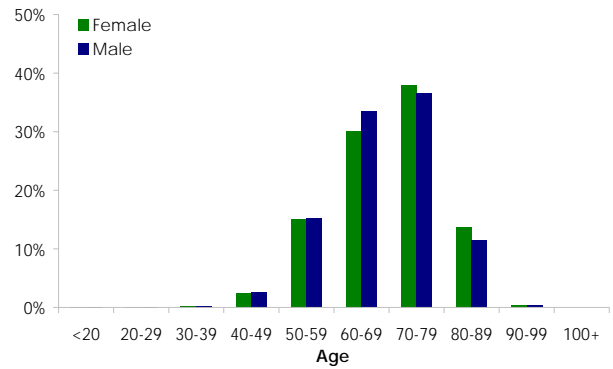
**Table SK1: Number of Knee Replacement by Gender**

Knee Replacement	Female		Male		Total	
	N	%	N	%	N	%
Unispacer	19	48.7	20	51.3	39	0.0
Patella/Trochlear	805	76.2	252	23.8	1057	0.5
Unicompartmental	12525	48.9	13082	51.1	25607	12.2
Bicompartmental	23	54.8	19	45.2	42	0.0
Partial Resurfacing	45	50.0	45	50.0	90	0.0
Total Knee	94557	57.4	70207	42.6	164764	78.7
Revision	9193	51.9	8524	48.1	17717	8.5
<b>Total</b>	<b>117167</b>	<b>56.0</b>	<b>92149</b>	<b>44.0</b>	<b>209316</b>	<b>100.0</b>

**Figure SK1: Knee Replacement by Gender**



**Figure SK2: Knee Replacement Age by Gender**



**Table SK2: Age by Gender for All Knee Replacement**

Gender	N	%	Min	Max	Med	Mean	SD
Female	117167	56.0	13	100	70	69.1	9.9
Male	92149	44.0	12	100	69	68.4	9.6
<b>Total</b>	<b>209316</b>	<b>100.0</b>	<b>12</b>	<b>100</b>	<b>70</b>	<b>68.8</b>	<b>9.8</b>

# **PRIMARY PARTIAL RESURFACING KNEE REPLACEMENT**

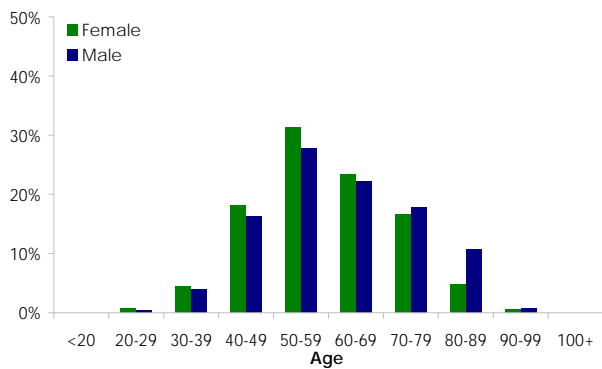
**Table SK3-P: Primary Partial Resurfacing Age by Gender**

Gender	N	%	Min	Max	Med	Mean	SD
Female	45	50.0	30	82	48	49.6	11.4
Male	45	50.0	17	70	49	47.1	12.8
<b>Total</b>	<b>90</b>	<b>100.0</b>	<b>17</b>	<b>82</b>	<b>49</b>	<b>48.3</b>	<b>12.1</b>

**Table SK3-PD: Primary Diagnosis**

Primary Diagnosis	N	%
Osteoarthritis	81	90.0
Other	4	4.4
Avascular Necrosis	4	4.4
Chondrocalcinosis	1	1.1
<b>Total</b>	<b>90</b>	<b>100.0</b>

**Figure SK3-P: Primary Age by Gender**



## **Revision of Known Primary Partial Resurfacing Knee Replacement**

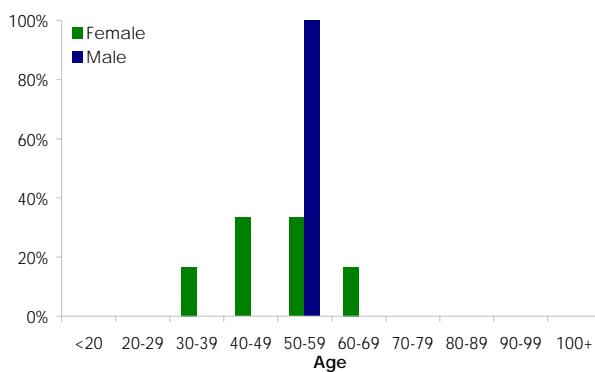
**Table SK3-R: Revision of Known Primary Partial Resurfacing Age by Gender**

Gender	N	%	Min	Max	Med	Mean	SD
Female	6	75.0	37	63	50	49.8	8.5
Male	2	25.0	52	59	56	55.5	4.9
<b>Total</b>	<b>8</b>	<b>100.0</b>	<b>37</b>	<b>63</b>	<b>52</b>	<b>51.3</b>	<b>7.9</b>

**Table SK3-RD: Revision Diagnosis**

Revision Diagnosis	N	%
Progression of Disease	4	50.0
Pain	2	25.0
Wear Tibial	1	12.5
Loosening	1	12.5
<b>Total</b>	<b>8</b>	<b>100.0</b>

**Figure SK3-R: Revision Age by Gender**



## Primary Unispace Knee Replacement

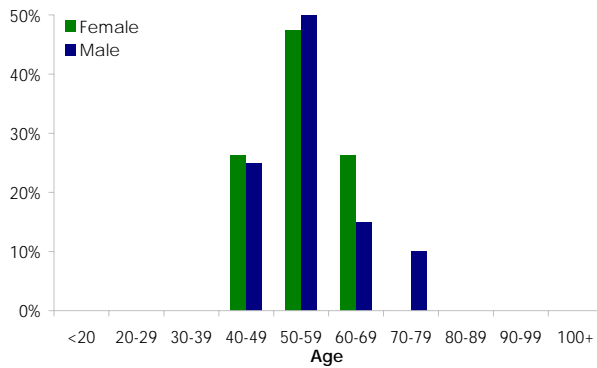
Table SK4-P: Primary Unispace Age by Gender

Gender	N	%	Min	Max	Med	Mean	SD
Female	19	48.7	40	69	56	54.1	8.4
Male	20	51.3	41	75	55	55.1	9.5
<b>Total</b>	<b>39</b>	<b>100.0</b>	<b>40</b>	<b>75</b>	<b>55</b>	<b>54.6</b>	<b>8.9</b>

Table SK4-PD: Primary Diagnosis

Primary Diagnosis	N	%
Osteoarthritis	39	100.0
<b>Total</b>	<b>39</b>	<b>100.0</b>

Figure SK4-P: Primary Age by Gender



## Revision of Known Primary Unispace Knee Replacement

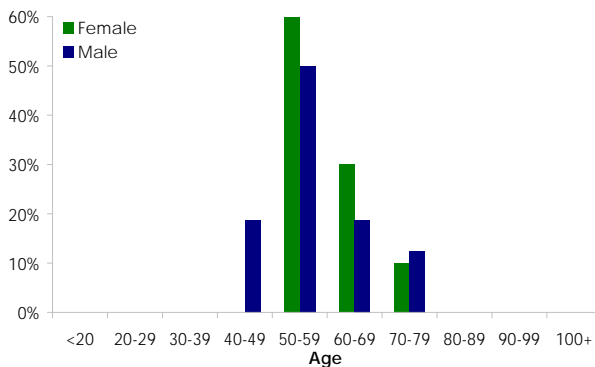
Table SK4-R: Revision of Known Primary Unispace Age by Gender

Gender	N	%	Min	Max	Med	Mean	SD
Female	10	38.5	52	70	58	59.6	5.1
Male	16	61.5	42	76	56	57.3	9.7
<b>Total</b>	<b>26</b>	<b>100.0</b>	<b>42</b>	<b>76</b>	<b>57</b>	<b>58.2</b>	<b>8.2</b>

Table SK4-RD: Revision Diagnosis

Revision Diagnosis	N	%
Pain	8	26.7
Synovitis	6	20.0
Loosening	4	13.3
Other	3	10.0
Implant Breakage Tibial	3	10.0
Progression of Disease	2	6.7
Incorrect Sizing	1	3.3
Malalignment	1	3.3
Infection	1	3.3
Wear Tibial	1	3.3
<b>Total</b>	<b>30</b>	<b>100.0</b>

Figure SK4-R: Revision Age by Gender



Note: Some patients have multiple diagnoses

## Primary Patella/Trochlear Knee Replacement

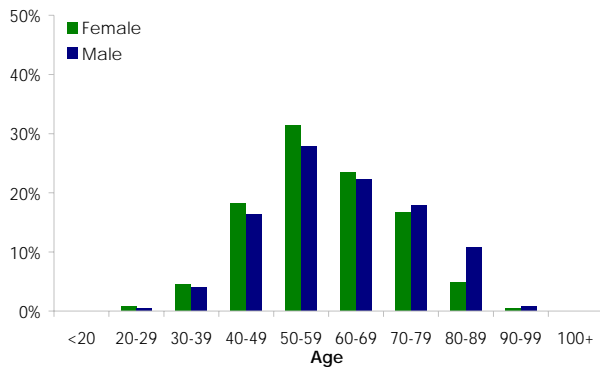
**Table SK5-P: Primary Patella/Trochlear Age by Gender**

Gender	N	%	Min	Max	Med	Mean	SD
Female	805	76.2	22	95	58	58.9	12.6
Male	252	23.8	27	95	60	60.9	13.5
<b>Total</b>	<b>1057</b>	<b>100.0</b>	<b>22</b>	<b>95</b>	<b>58</b>	<b>59.4</b>	<b>12.8</b>

**Table SK5-PD: Primary Diagnosis**

Primary Diagnosis	N	%
Osteoarthritis	1045	98.9
Other Inflammatory Arthritis	10	0.9
Other	2	0.2
<b>Total</b>	<b>1057</b>	<b>100.0</b>

**Figure SK5-P: Primary Age by Gender**



## Revision of Known Primary Patella/Trochlear Knee Replacement

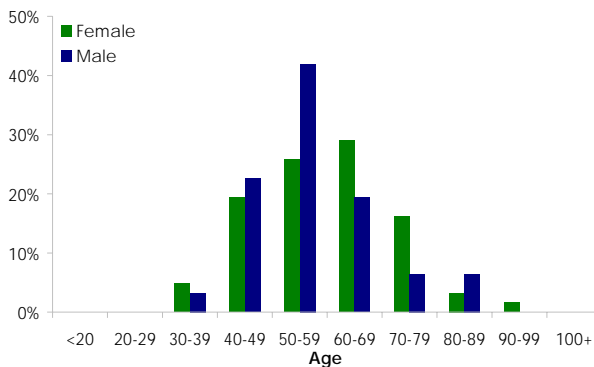
**Table SK5-R: Revision of Known Primary Patella/Trochlear Age by Gender**

Gender	N	%	Min	Max	Med	Mean	SD
Female	62	66.7	35	93	59	59.4	12.4
Male	31	33.3	39	83	57	57.6	10.6
<b>Total</b>	<b>93</b>	<b>100.0</b>	<b>35</b>	<b>93</b>	<b>58</b>	<b>58.8</b>	<b>11.8</b>

**Table SK5-RD: Revision Diagnosis**

Revision Diagnosis	N	%
Progression of Disease	24	24.2
Loosening	17	17.2
Pain	15	15.2
Implant Breakage Patella	9	9.1
Patello Femoral Pain	7	7.1
Wear Patella	5	5.1
Other	4	4.0
Malalignment	4	4.0
Patella Maltracking	3	3.0
Infection	2	2.0
Synovitis	2	2.0
Dislocation	2	2.0
Instability	1	1.0
Lysis	1	1.0
Fracture	1	1.0
Avascular Necrosis	1	1.0
Wear Tibial	1	1.0
<b>Total</b>	<b>99</b>	<b>100.0</b>

**Figure SK5-R: Revision Age by Gender**



Note: Some patients have multiple diagnoses

## Primary Unicompartmental Knee Replacement

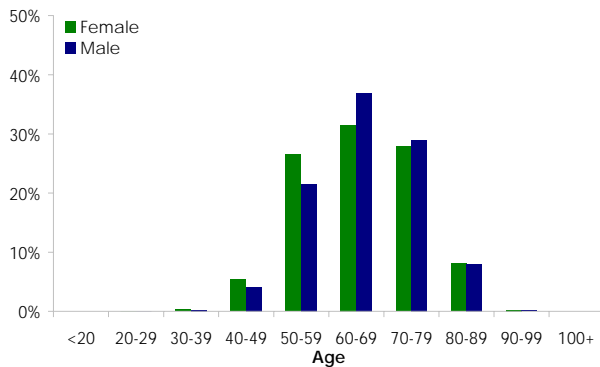
**Table SK6-P: Primary Unicompartmental Age by Gender**

Gender	N	%	Min	Max	Med	Mean	SD
Female	12525	48.9	25	95	65	65.1	10.3
Male	13082	51.1	24	95	66	66.0	9.7
<b>Total</b>	<b>25607</b>	<b>100.0</b>	<b>24</b>	<b>95</b>	<b>65</b>	<b>65.6</b>	<b>10.0</b>

**Table SK6-PD: Primary Diagnosis**

Primary Diagnosis	N	%
Osteoarthritis	25306	98.8
Avascular Necrosis	181	0.7
Rheumatoid Arthritis	82	0.3
Other Inflammatory Arthritis	29	0.1
Other	7	0.0
Tumour	2	0.0
<b>Total</b>	<b>25607</b>	<b>100.0</b>

**Figure SK6-P: Primary Age by Gender**



## Revision of Known Primary Unicompartmental Knee Replacement

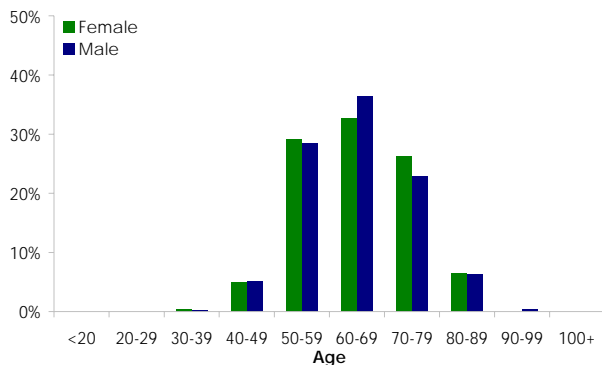
**Table SK6-R: Revision of Known Primary Unicompartmental Age by Gender**

Gender	N	%	Min	Max	Med	Mean	SD
Female	835	51.8	33	88	65	64.5	10.0
Male	778	48.2	37	92	64	64.3	9.8
<b>Total</b>	<b>1613</b>	<b>100.0</b>	<b>33</b>	<b>92</b>	<b>64</b>	<b>64.4</b>	<b>9.9</b>

**Table SK6-RD: Revision Diagnosis**

Revision Diagnosis	N	%
Loosening	834	48.2
Progression of Disease	262	15.2
Pain	237	13.7
Infection	76	4.4
Fracture	58	3.4
Lysis	40	2.3
Wear Tibial	31	1.8
Bearing/Dislocation	29	1.7
Dislocation	29	1.7
Malalignment	21	1.2
Other	17	1.0
Instability	15	0.9
Implant Breakage Tibial	15	0.9
Patello Femoral Pain	14	0.8
Avascular Necrosis	12	0.7
Incorrect Sizing	12	0.7
Implant Breakage Femoral	11	0.6
Synovitis	9	0.5
Arthrofibrosis	7	0.4
<b>Total</b>	<b>1729</b>	<b>100.0</b>

**Figure SK6-R: Revision Age by Gender**



Note: Some patients have multiple diagnoses

## Primary Bicompartamental Knee Replacement

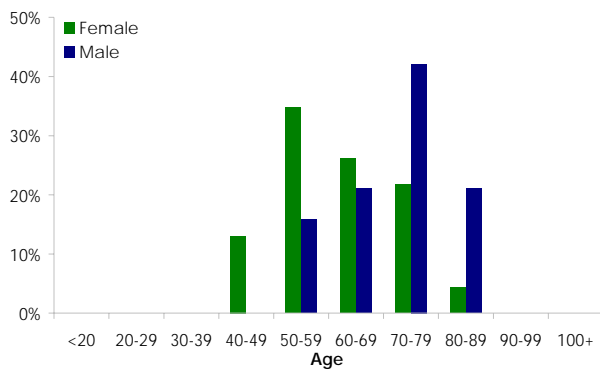
**Table SK7-P: Primary Bicompartamental Age by Gender**

Gender	N	%	Min	Max	Med	Mean	SD
Female	23	54.8	46	83	61	62.2	11.7
Male	19	45.2	56	86	71	70.3	9.2
<b>Total</b>	<b>42</b>	<b>100.0</b>	<b>46</b>	<b>86</b>	<b>67</b>	<b>65.9</b>	<b>11.3</b>

**Table SK7-PD: Primary Diagnosis**

Primary Diagnosis	N	%
Osteoarthritis	42	100.0
<b>Total</b>	<b>42</b>	<b>100.0</b>

**Figure SK7-P: Primary Age by Gender**



## Known Primary Bicompartamental Knee Replacement

**Table SK7-R: Revision of Known Primary Bicompartamental Age by Gender**

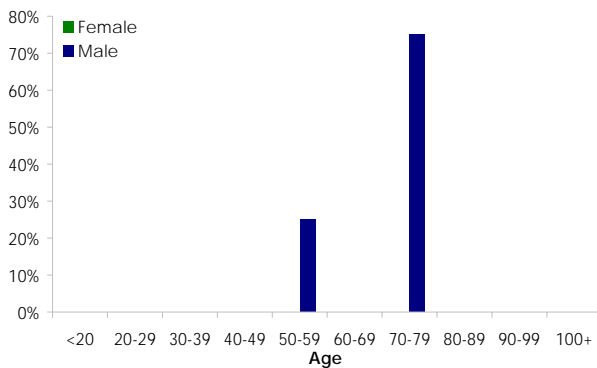
Gender	N	%	Min	Max	Med	Mean	SD
Female	0	0.0	.	.	.	.	.
Male	4	100.0	59	74	71	68.8	6.7
<b>Total</b>	<b>4</b>	<b>100.0</b>	<b>59</b>	<b>74</b>	<b>71</b>	<b>68.8</b>	<b>6.7</b>

**Table SK7-RD: Revision Diagnosis**

Revision Diagnosis	N	%
Patello Femoral Pain	4	80.0
Progression of Disease	1	20.0
<b>Total</b>	<b>5</b>	<b>100.0</b>

Note: Some patients have multiple diagnoses

**Figure SK7-R: Revision Age by Gender**



# PRIMARY TOTAL KNEE REPLACEMENT

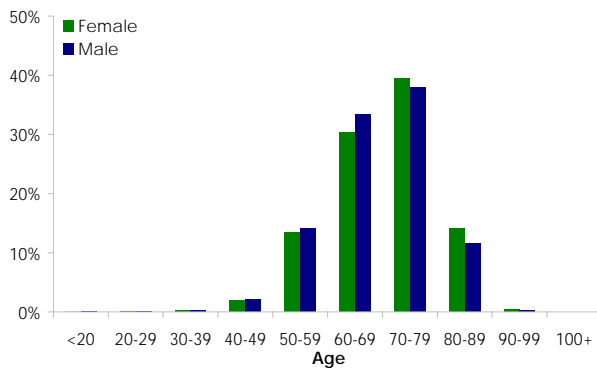
Table SK8-P: Primary Total Age by Gender

Gender	N	%	Min	Max	Med	Mean	SD
Female	94557	57.4	13	100	71	69.6	9.5
Male	70207	42.6	12	100	69	68.8	9.4
<b>Total</b>	<b>164764</b>	<b>100.0</b>	<b>12</b>	<b>100</b>	<b>70</b>	<b>69.3</b>	<b>9.5</b>

Table SK8-PD: Primary Diagnosis

Primary Diagnosis	N	%
Osteoarthritis	159529	96.8
Rheumatoid Arthritis	3385	2.1
Other Inflammatory Arthritis	852	0.5
Avascular Necrosis	641	0.4
Tumour	216	0.1
Other	141	0.1
<b>Total</b>	<b>164764</b>	<b>100.0</b>

Figure SK8-P: Primary Age by Gender



## Revision of Known Primary Total Knee Replacement

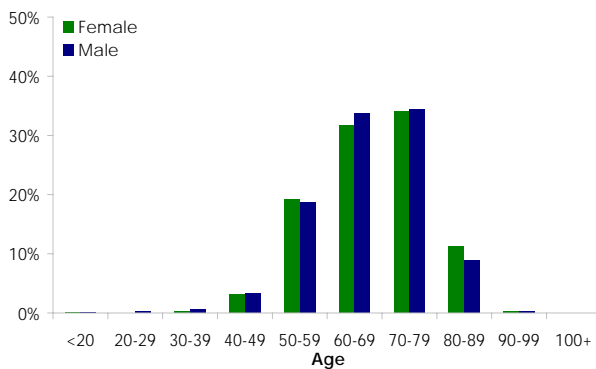
Table SK8-R: Revision of Known Primary Total Age by Gender

Gender	N	%	Min	Max	Med	Mean	SD
Female	2149	52.6	17	94	68	67.7	10.0
Male	1938	47.4	16	96	68	66.9	10.0
<b>Total</b>	<b>4087</b>	<b>100.0</b>	<b>16</b>	<b>96</b>	<b>68</b>	<b>67.3</b>	<b>10.0</b>

Table SK8-RD: Revision Diagnosis

Revision Diagnosis	N	%
Loosening	1343	30.7
Infection	927	21.2
Patello Femoral Pain	546	12.5
Pain	465	10.6
Instability	222	5.1
Arthrofibrosis	186	4.2
Fracture	99	2.3
Malalignment	86	2.0
Lysis	77	1.8
Other	69	1.6
Incorrect Sizing	60	1.4
Wear Tibial	59	1.3
Implant Breakage Tibial	39	0.9
Bearing/Dislocation	35	0.8
Patella Maltracking	29	0.7
Dislocation	26	0.6
Synovitis	25	0.6
Implant Breakage Patella	21	0.5
Patella Erosion	17	0.4
Progression of Disease	17	0.4
Avascular Necrosis	11	0.3
Implant Breakage Femoral	11	0.3
Wear Patella	8	0.2
Heterotopic Bone	2	0.0
<b>Total</b>	<b>4380</b>	<b>100.0</b>

Figure SK8-R: Revision Age by Gender



Note: Some patients have multiple diagnoses

## ALL REVISION KNEE REPLACEMENT

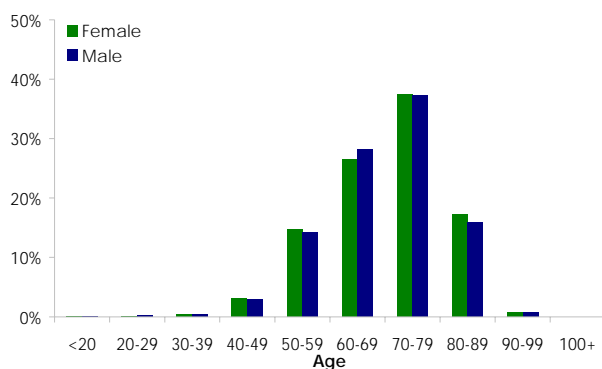
**Table SK9-R: All Revision Knee Replacement Age by Gender**

Gender	N	%	Min	Max	Med	Mean	SD
Female	9193	51.9	17	97	71	69.7	10.5
Male	8524	48.1	16	98	71	69.4	10.5
<b>Total</b>	<b>17717</b>	<b>100.0</b>	<b>16</b>	<b>98</b>	<b>71</b>	<b>69.5</b>	<b>10.5</b>

**Table SK9-RD: Revision Diagnosis**

Revision Diagnosis	N	%
Loosening	7382	36.5
Infection	3017	14.9
Wear Tibial	1524	7.5
Pain	1451	7.2
Lysis	1384	6.9
Patello Femoral Pain	1128	5.6
Implant Breakage Tibial	665	3.3
Progression of Disease	623	3.1
Instability	585	2.9
Fracture	418	2.1
Arthrofibrosis	337	1.7
Other	311	1.5
Implant Breakage Patella	254	1.3
Malalignment	201	1.0
Wear Patella	195	1.0
Synovitis	129	0.6
Implant Breakage Femoral	123	0.6
Bearing/Dislocation	113	0.6
Incorrect Sizing	110	0.5
Dislocation	103	0.5
Patella Maltracking	86	0.4
Avascular Necrosis	33	0.2
Patella Erosion	18	0.1
Heterotopic Bone	11	0.1
<b>Total</b>	<b>20201</b>	<b>100.0</b>

**Figure SK9-R: Revision Age by Gender**



Note: Some patients have multiple diagnoses

Note: These include all revision knee replacements, regardless of whether the primary has been recorded by the Registry